

Occlutech® LAA Occluder¹

Ordering information



Article No. ¹	Landing Zone (mm)	DEVICE			Sheath (F)	Pusher Article No. (colour ²)
		Ø Proximal (mm)	Ø Distal (mm)	Height (mm)		
30LAA18	15-17	18	19	12	12	51FP120 ●
30LAA21	17-20	21	24	14	12	51FP120 ●
30LAA24	20-23	24	25	16	14	51FP120 ●
30LAA27	23-26	27	28	18	14	51FP150 ●
30LAA30	26-29	30	31	20	14	51FP160 ○
30LAA33	29-32	33	34	22	14	51FP160 ○

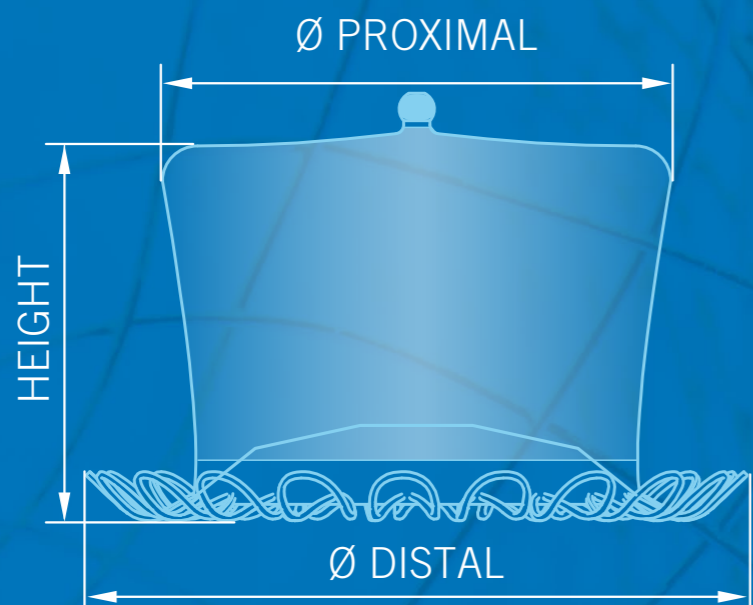
1. Availability subject to regulatory approval. Product data may be subject to change. Contact your Occlutech representative for information.

2. Colour refers to sticker on outer box.

Sizing flexibility

Occlutech recommends 1-4 mm over-sizing to the landing zone measurement when implanting the device. The unique flexibility allows more freedom on sizing compared to more rigid types of occluders.

1-4 mm
over-sizing to the landing zone



Customer Service International
Occlutech, La Cours Gata 2, SE-252 31 Helsingborg, Sweden
Tel +46 (0)42 33 65 32, Fax +46 (0)42 311 09 70
order@occlutech.com, www.occlutech.com



Perfecting Performance



Occlutech® LAA Occluder



Perfecting Performance in LAA Occlusion



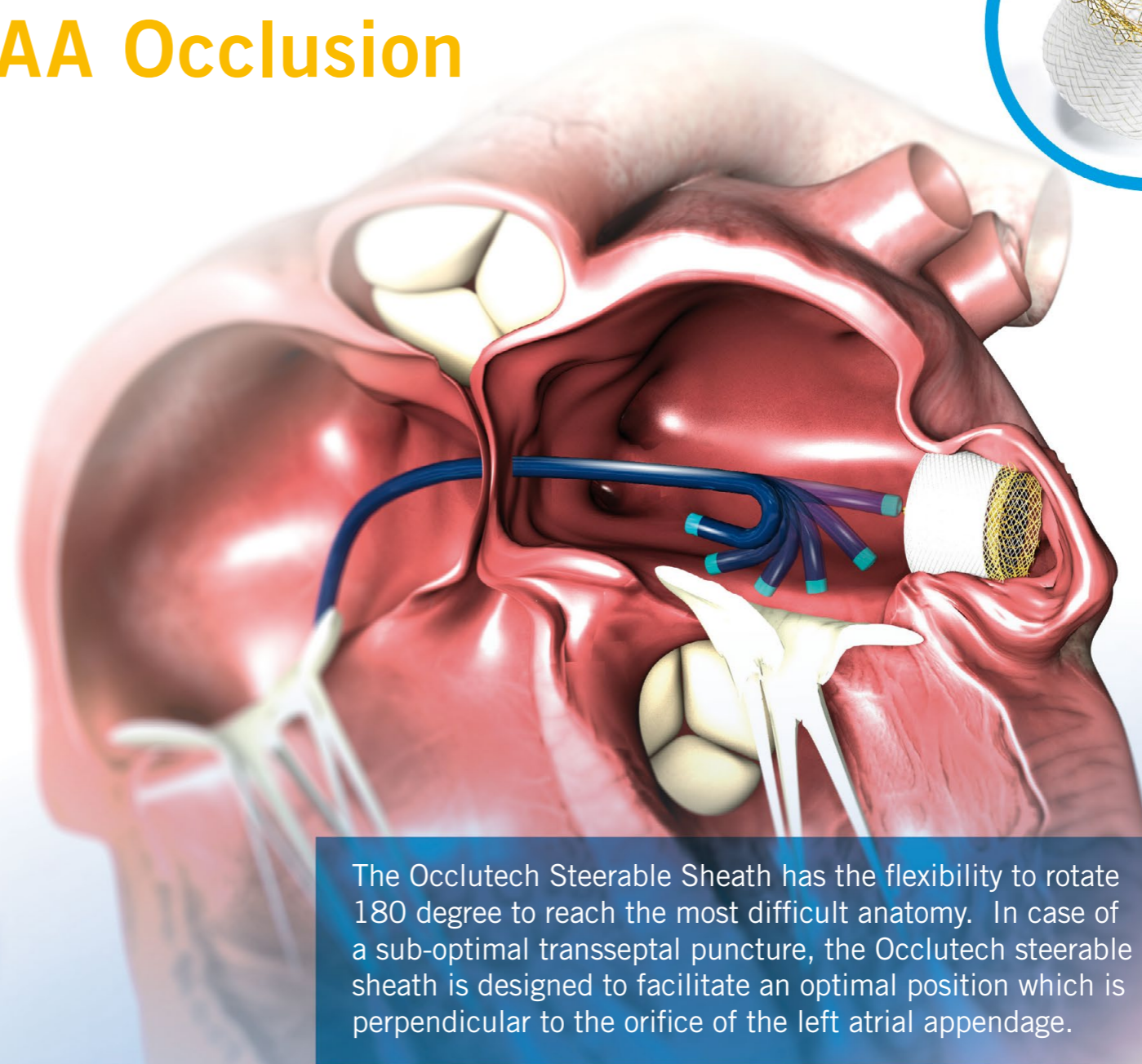
CLINICAL BENEFITS

- Conforms to most anatomies
- Fast sealing
- Safer anchoring and positioning



EASE OF USE

- The Occlutech steerable sheath (OSS) enables easier and more precise transseptal puncture
- The OSS simplifies procedure and potentially reduces procedure time

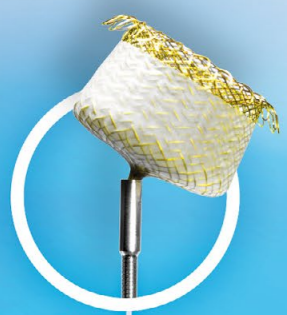


The Occlutech Steerable Sheath has the flexibility to rotate 180 degree to reach the most difficult anatomy. In case of a sub-optimal transseptal puncture, the Occlutech steerable sheath is designed to facilitate an optimal position which is perpendicular to the orifice of the left atrial appendage.

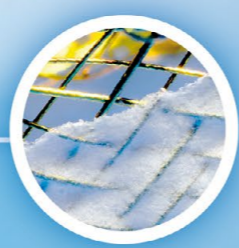


Rounded loops provide safe anchoring

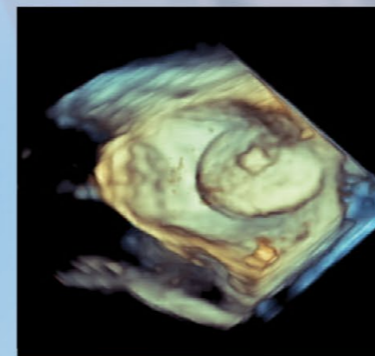
Flexible braiding leads to adaptability to the anatomy



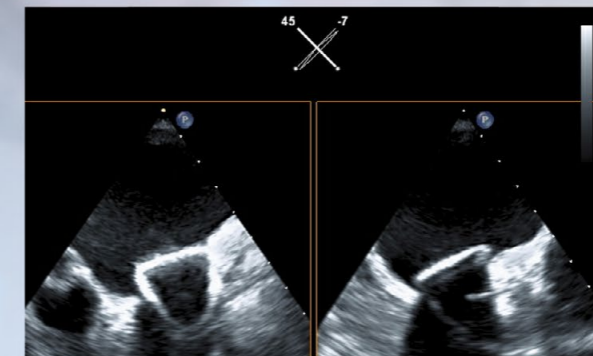
Flex II hub supports easy connector to the pistol pusher



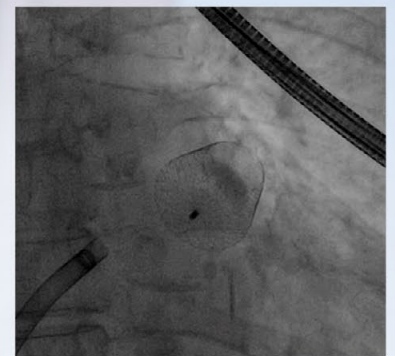
Unique nano-fibrous polyurethane covering ensures fast cell ingrowth



3D Echocardiography image of the LAA occluder implanted at 45 degree



2D Echocardiography image (biplane view) of the LAA occluder implanted at 45 degree and 7 degree



Fluoroscopy image of the release of the LAA occluder